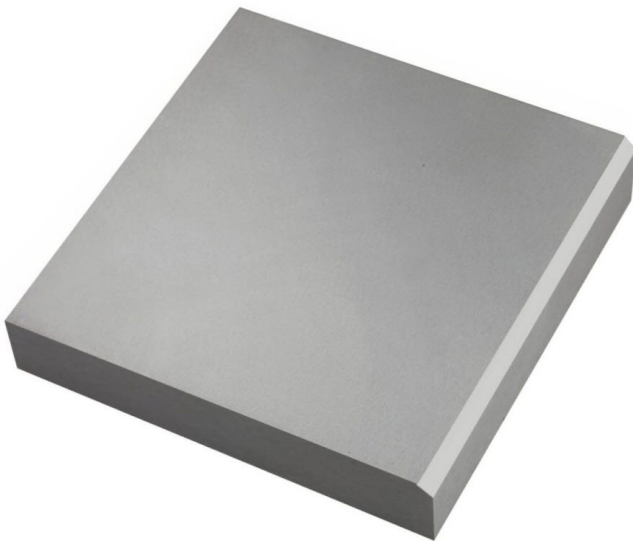


BENCH BLOCK 100 X 100 X 20

SKU: 1186

Bench Blocks - 100 X 100 X 20 from Durston Tools. Durston Tools' new steel Bench Blocks. Also known as a 'flat plate', 'flat stake' or 'swage block'. The bench blocks are a key workshop tool for flattening, laying out or chasing. Each bench block is constructed out of tool steel, ground flat, polished and case hardened.



PRODUCT DESCRIPTION

Durstons' new steel Bench Blocks. Also known as a 'flat plate', 'flat stake' or 'swage block'. The bench blocks are a key workshop tool for flattening, laying out or chasing. Each bench block is constructed out of tool steel, ground flat, polished and case hardened. Use with a mallet or hammer to flatten metal, or to act as a hard plate against a piece of metal for texturing or punching. The surface should be kept clean and polished, as any marks will be transferred to the metal's surface. Available in 6 different sizes.

ADDITIONAL INFORMATION

Weight	1.65 kg
Dimensions	12 × 12 × 3.2 cm
Product Weight (kg)	1.5KG



Product Length (mm)	100
Product Width (mm)	100
Product Height (mm)	20